



Quick Installation

Version 1.0h

NOTICE: The PLx cameras are only compliant with PC running under one of the following operating systems **Windows XP SP3, Vista or Win 7, 8 & 8.1 - x86 / x64.**

To install the software package, double-click on the **autorun.exe** utility in the root of the USB key.

At this stage of the installation, **do not connect** the camera to the USB 2.0 port of your PC.

The installation window below appears and then select programs to install on the computer.

1. Third party components installation

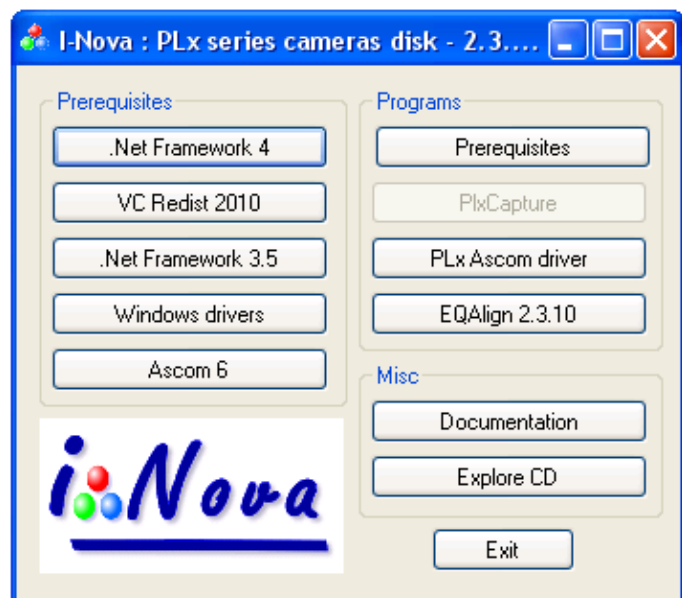
Windows XP Vista:

PLxCapture software requires the installation of the following prerequisites: **.Net Framework 3.5, .Net Framework 4, Ascom V6 and VC Redist 2010.**

Windows 7, 8 and 8.1 x64:

Only **Ascom V6** needs to be installed.

- For all applications, it is necessary to install software drivers: click on the "**Windows Drivers**" button and select the **camera model** to be installed.
- Click on "**Prerequisites**" and close the window
- For planetary imaging / long exposure and Visual enhancement, install **PLxCapture** application.
- For Polar pointing, PE analysis and autoguiding, install **EQAlign** application.
- To use the camera with another third-party software, it is necessary to install **PLx ASCOM driver**.
- Connect** the camera to the PC and confirm the choice of Windows during the "**Add peripheral Wizard**" procedure.
- For a complete documentation of the software package, click on "**Documentation**".



We recommend to check frequently our FTP site and download the latest software package version from this link: <http://www.inova-ccd.fr/download/>

For an efficient technical support, please contact us either by email support@nova-ccd.com or by phone +33 1 47 84 70 27 with details of your configuration (mount, instrument, computer type, etc.)...

I-Nova

www.inova-ccd.com

33, rue des gros grès - 92700 Colombes – France - Tél. : +33-(0)1 47 84 70 27 – Fax : +33-(0)9 50 53 50 80